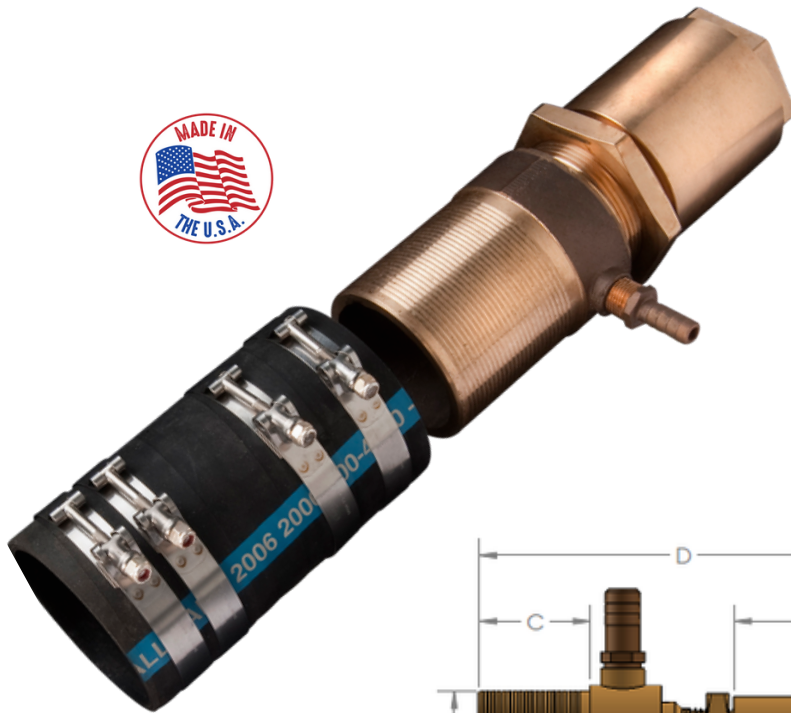
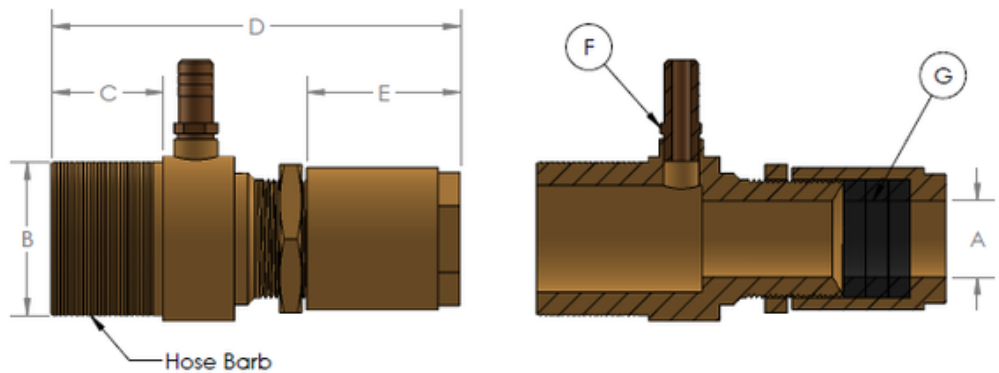


# SELF-ALIGNING SHAFT SEALS | FOR BOATS WITH **SHAFT TUBES**



**SA Series** - Water fed self-aligning shaft seal that is safer and performs better than so-called "*driple*s" or "*packless*" mechanical seals. Compatible with most shaft tube (stern tube) arrangements. Refer to sizing guide below to determine correct part # based on shaft diameter and shaft tube size.



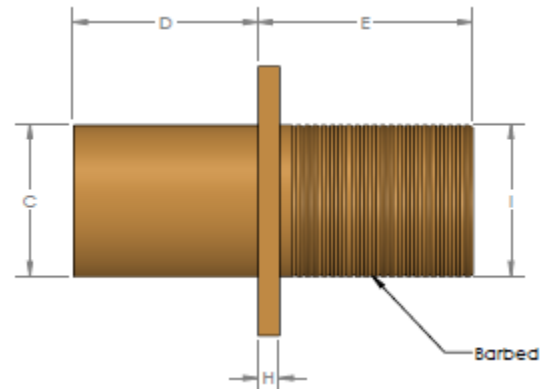
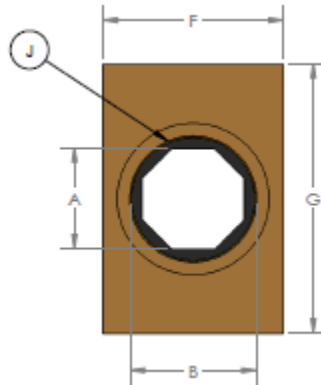
## PART SELECTOR | SIZING GUIDE

Part Number	A Shaft Diameter	B Hose Diameter*	C Barbed Length	D Overall Length	E Nut Length	F Hose Fitting	G Packing Size
SA-1250-2.0	1-1/4"	2"	<i>Call for specs and availability</i>				
SA-1250-2.5	1-1/4"	2-1/2"	<i>Call for specs and availability</i>				
SA-1500-2.5	1-1/2"	2-1/2"	2"	6-3/4"	3"	1/2" or 3/4"	3/8"
SA-1750-3.0	1-3/4"	3"	2-1/2"	8"	3-1/2"	3/4"	1/2"
SA-1750-3.5	1-3/4"	3-1/2"	2-1/2"	8"	3-1/2"	3/4"	1/2"
SA-2000-3.0	2"	3"	2-1/2"	8"	3-1/2"	3/4"	3/8"
SA-2000-3.5	2"	3-1/2"	2-1/2"	8"	3-1/2"	3/4"	3/8"
SA-2250-4.0	2-1/4"	4"	3-1/2"	11"	4-1/4"	3/4"	1/2"
SA-2500-4.0	2-1/2"	4"	3-1/2"	11"	4-1/4"	3/4"	3/8"
SA-2750-4.5	2-3/4"	4-1/2"	2-3/4"	11"	4-1/4"	3/4"	1/2"
SA-3000-4.5	3"	4-1/2"	2-3/4"	11"	4-1/4"	3/4"	3/8"
SA-3000-5.0	3"	5"	<i>Call for specs and availability</i>				
SA-3500-5.0	3-1/2"	5"	<i>Call for specs and availability</i>				

\*refer to the outside diameter of boat's shaft tube (stern tube) when ordering

# SELF-ALIGNING SHAFT SEALS | FOR BOATS WITH TRADITIONAL STUFFING BOXES

**ISB-SA Combo Series** - The perfect upgrade for boats with traditional bronze stuffing boxes. Our self-aligning shaft seal is attached to an intermediate shaft bearing (in place of existing stuffing box) offering improved safety and reliability over "**dripless**" or "**packless**" style mechanical seals. Proven performance for today's higher horsepower commercial and recreational boats with less noise and vibration.



## BUYING TIP:

The Intermediate Shaft Bearing (ISB) mounts in place of a traditional stuffing box and the **SA-Series** self-aligning shaft seal (previous page) attaches to the barbed end of the ISB bearing.

### PART SELECTOR | SIZING GUIDE

Part Number	A Shaft Diameter	B Bearing O.D.	C Pilot Diameter	D Pilot Length	E Exposed Length	F Flange Width	G Flange Length	H Flange Thickness	I Barbed O.D.*	J Bearing Code
ISB-1000	1"	1-1/2"	2"	2"	2-1/2"	3-1/2"	5"	1/2"	2" or 2-1/2"	Bale
ISB-1125	1-1/8"	1-1/2"	2"	2"	2-1/2"	3-1/2"	5"	1/2"	2" or 2-1/2"	Beam
ISB-1250	1-1/4"	2"	2-1/2"	2-1/2"	2-1/2"	3-3/4"	6"	1/2"	2-1/2" or 3"	Bite
ISB-1375	1-3/8"	2"	2-1/2"	2-1/2"	2-1/2"	3-3/4"	6"	1/2"	2-1/2" or 3"	Bold
ISB-1500	1-1/2"	2"	2-1/2"	3"	3"	4"	6-1/2"	1/2"	2-1/2" or 3"	Boss
ISB-1750	1-3/4"	2-5/8"	3" to 3-1/2"	4-1/8"	3-7/8"	5"	7-3/4"	5/8"	3" or 3-1/2"	Buck
ISB-2000	2"	2-5/8"	3" to 3-1/2"	4-1/8"	3-7/8"	5"	7-3/4"	5/8"	3" or 3-1/2"	Call
ISB-2250	2-1/4"	3-1/8"	4"	4"	4"	4-7/8"	7-3/4"	5/8"	4"	Cart
ISB-2500	2-1/2"	3-1/8"	4"	4"	4"	4-7/8"	7-3/4"	5/8"	4"	Cord
ISB-2750	2-3/4"	3-3/4"	4-1/2"	5-3/4"	6-1/4"	6"	9"	3/4"	4-1/2"	Curd
ISB-3000	3"	3-3/4"	4-1/2"	5-3/4"	6-1/4"	6"	9"	3/4"	4-1/2"	Dane
ISB-3500	3-1/2"	Call for specs and availability								